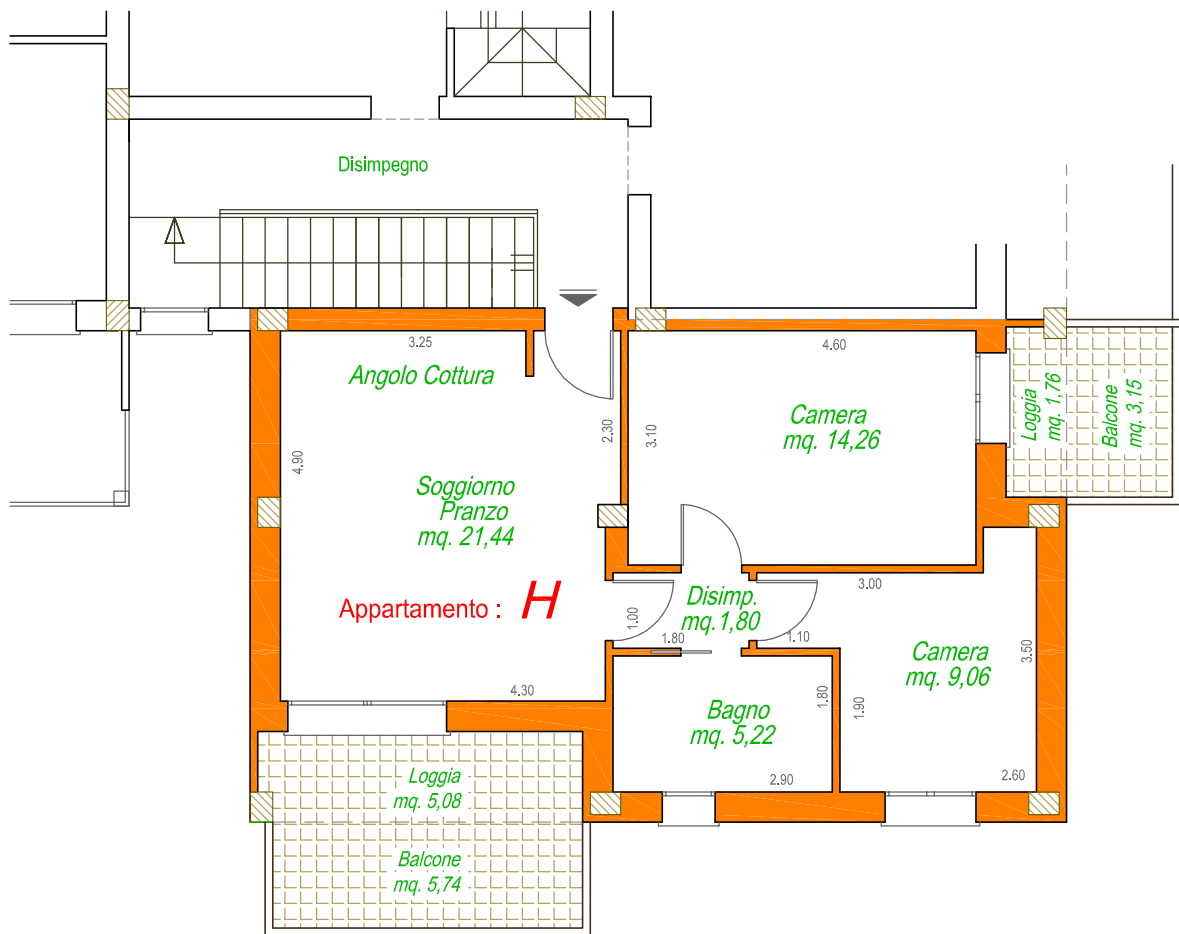


Superficie Commerciale App.to: mq. 65,55

Sup. Comm. Logge: mq. 7,10

Sup. Comm. Balconi: mq. 8,90

Sup. Comm. Garage + Cantina: mq. 29,00



oggetto:
NUOVA CONTEA
Fabbricato 3

APPARTAMENTO "H"
Piano Primo



Via Casale, 297 scala C int. 2
47827 Villa Verucchio (RN)

Tel. 0541.670472 - Fax 0541.673035
www.immobiliaresemprini.com
info@immobiliaresemprini.com

data:

scala:
1:100