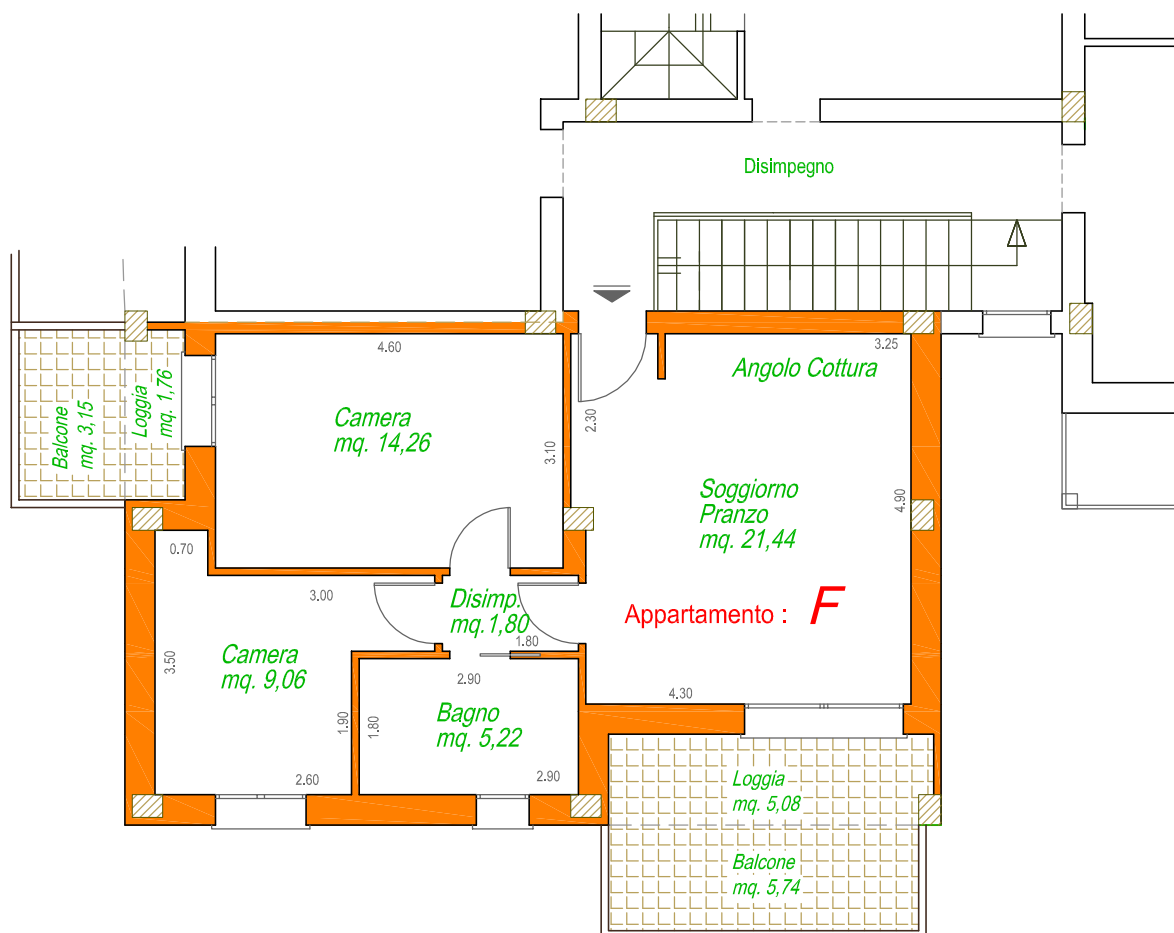


Superficie Commerciale App.to:	mq. 65,55
Sup. Comm. Loggia:	mq. 7,10
Sup. Comm. Balconi:	mq. 8,90
Sup. Comm. Garage:	mq. 17,50



oggetto:
NUOVA CONTEA
 Fabbricato 3

APPARTAMENTO "F"
 Piano Primo



Via Casale, 297 scala C int. 2
 47827 Villa Verucchio (RN)

Tel. 0541.670472 - Fax 0541.673035
www.immobiliaresemprini.com
info@immobiliaresemprini.com

data:

scala:
 1:100