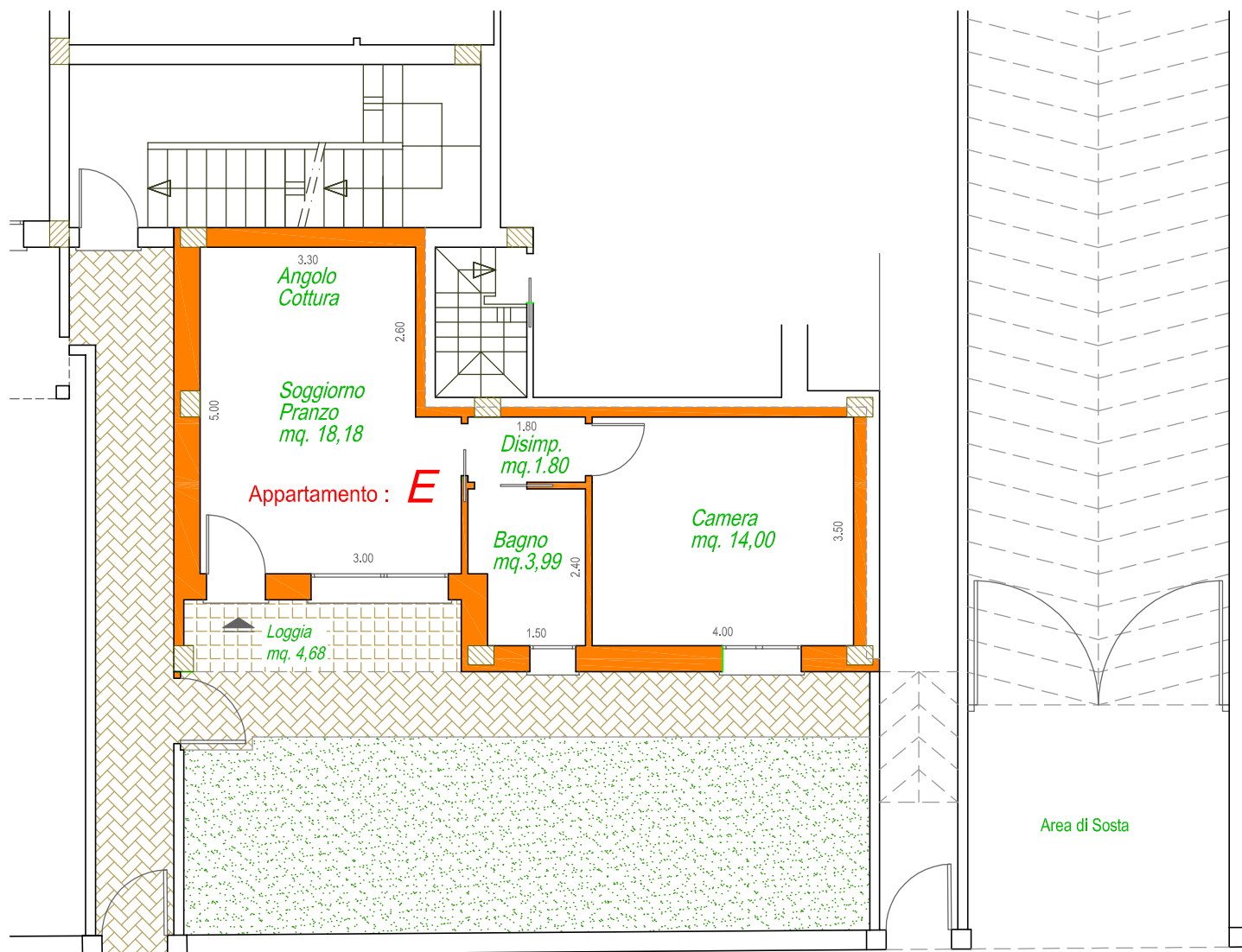


Superficie Commerciale App.to: mq. 48,90

Sup. Comm. Loggia: mq. 4,80

Sup. Comm. Garage: mq. 16,50

Sup. Comm. Area esterna: mq. 46,40



oggetto:
NUOVA CONTEA
Fabbricato 3

APPARTAMENTO "E"
Piano Terra

**Semprini
Severino**

Via Casale, 297 scala C int. 2
47827 Villa Verucchio (RN)

Tel. 0541.670472 - Fax 0541.673035
www.immobiliaresemprini.com
info@immobiliaresemprini.com

data:

scala:
1:100