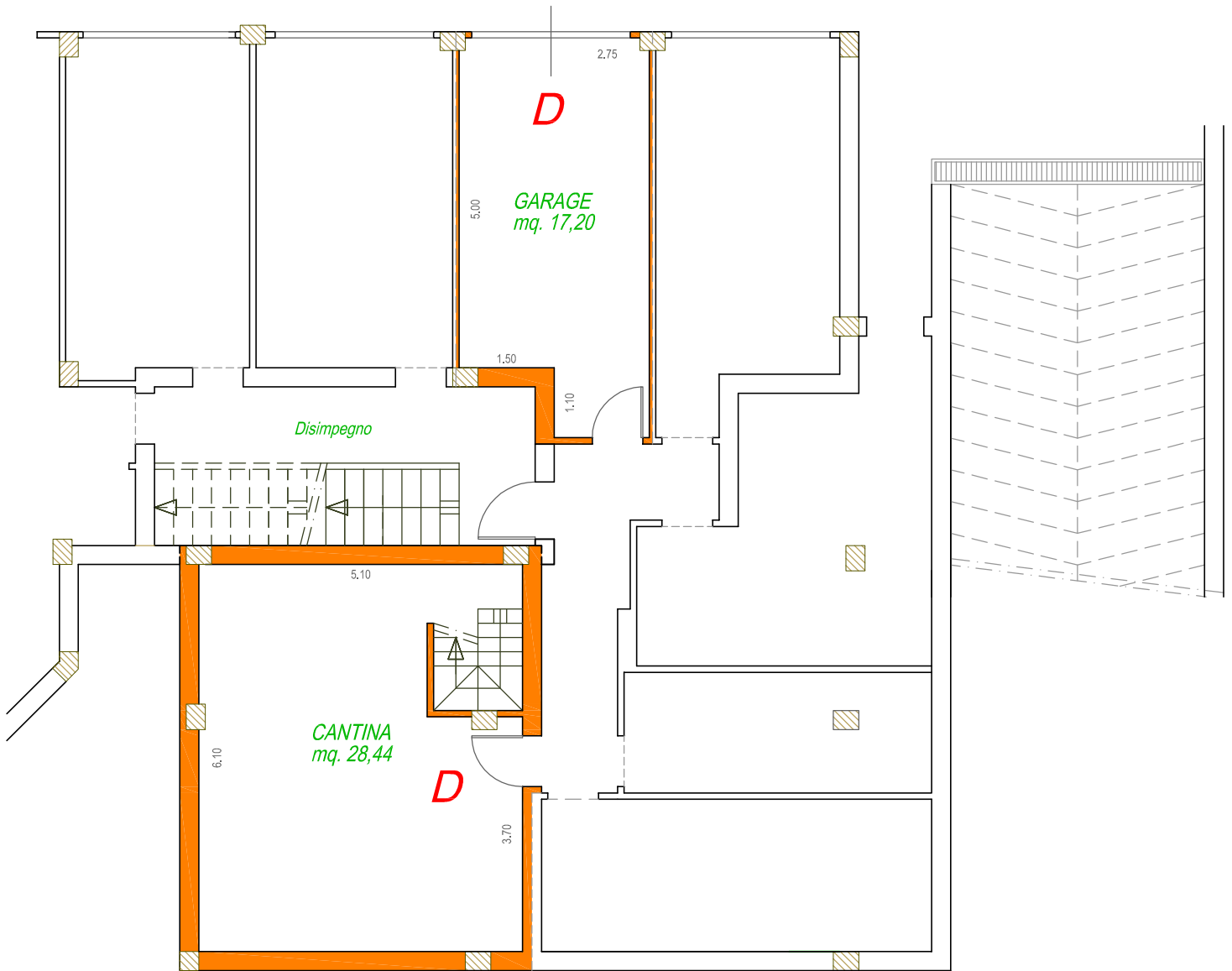


Sup. Comm. Garage:

mq. 19,00

Sup. Comm. Cantina:

mq. 37,80



oggetto:  
NUOVA CONTEA  
Fabbricato 3

**GARAGE E CANTINA "D"**  
Piano Interrato



Via Casale, 297 scala C int. 2  
47827 Villa Verucchio (RN)

Tel. 0541.670472 - Fax 0541.673035  
[www.immobiliaresemprini.com](http://www.immobiliaresemprini.com)  
[info@immobiliaresemprini.com](mailto:info@immobiliaresemprini.com)

data:

scala:  
1:100