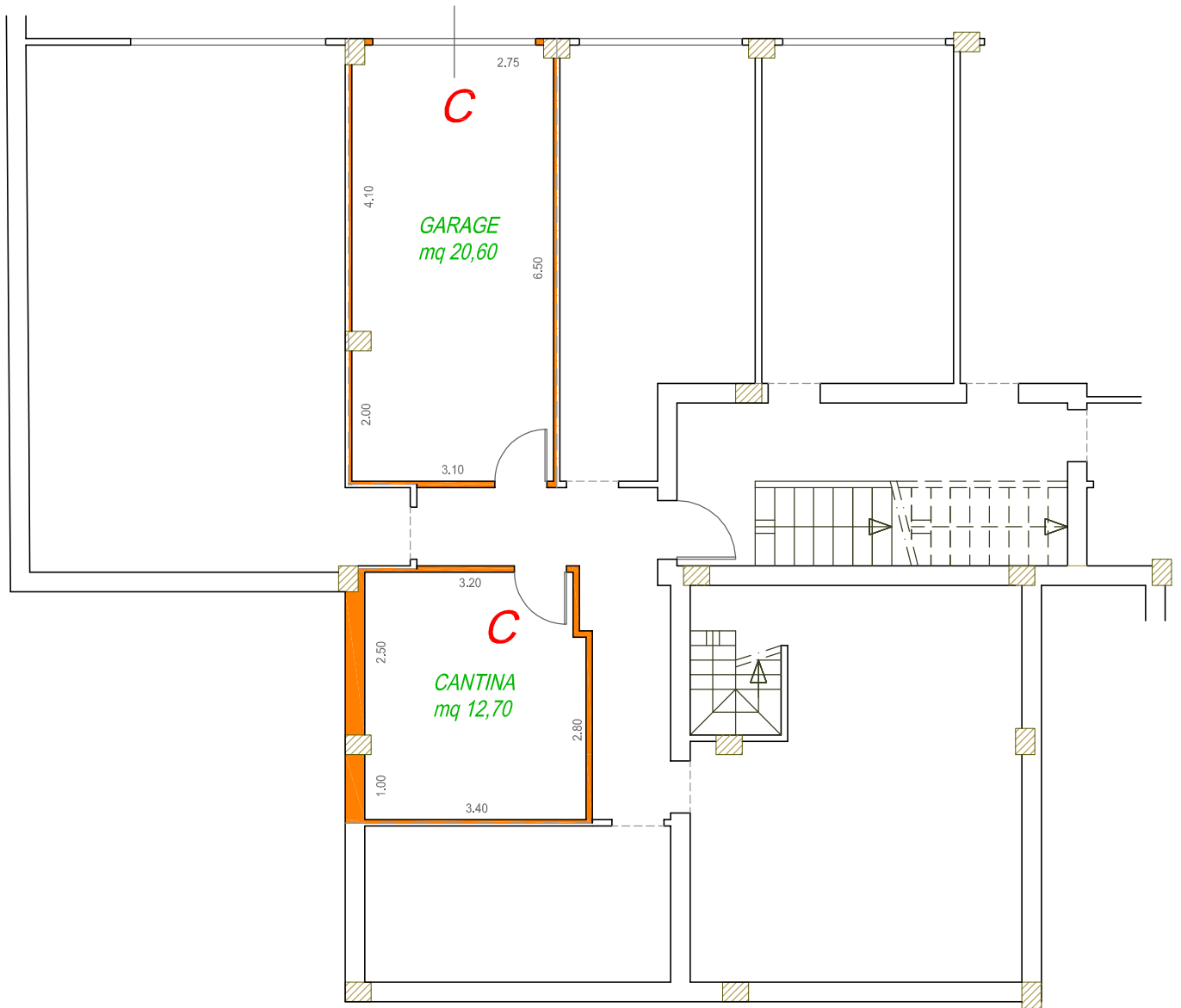


Sup. Comm. Garage+Cantina:

mq. 36,50



oggetto:  
NUOVA CONTEA  
Fabbricato 3  
GARAGE e CANTINA "C"  
Piano INTERRATO



Via Casale, 297 scala C int. 2  
47827 Villa Verucchio (RN)

Tel. 0541.670472 - Fax 0541.673035  
[www.immobiliaresemprini.com](http://www.immobiliaresemprini.com)  
[info@immobiliaresemprini.com](mailto:info@immobiliaresemprini.com)

data:

scala:  
1:100