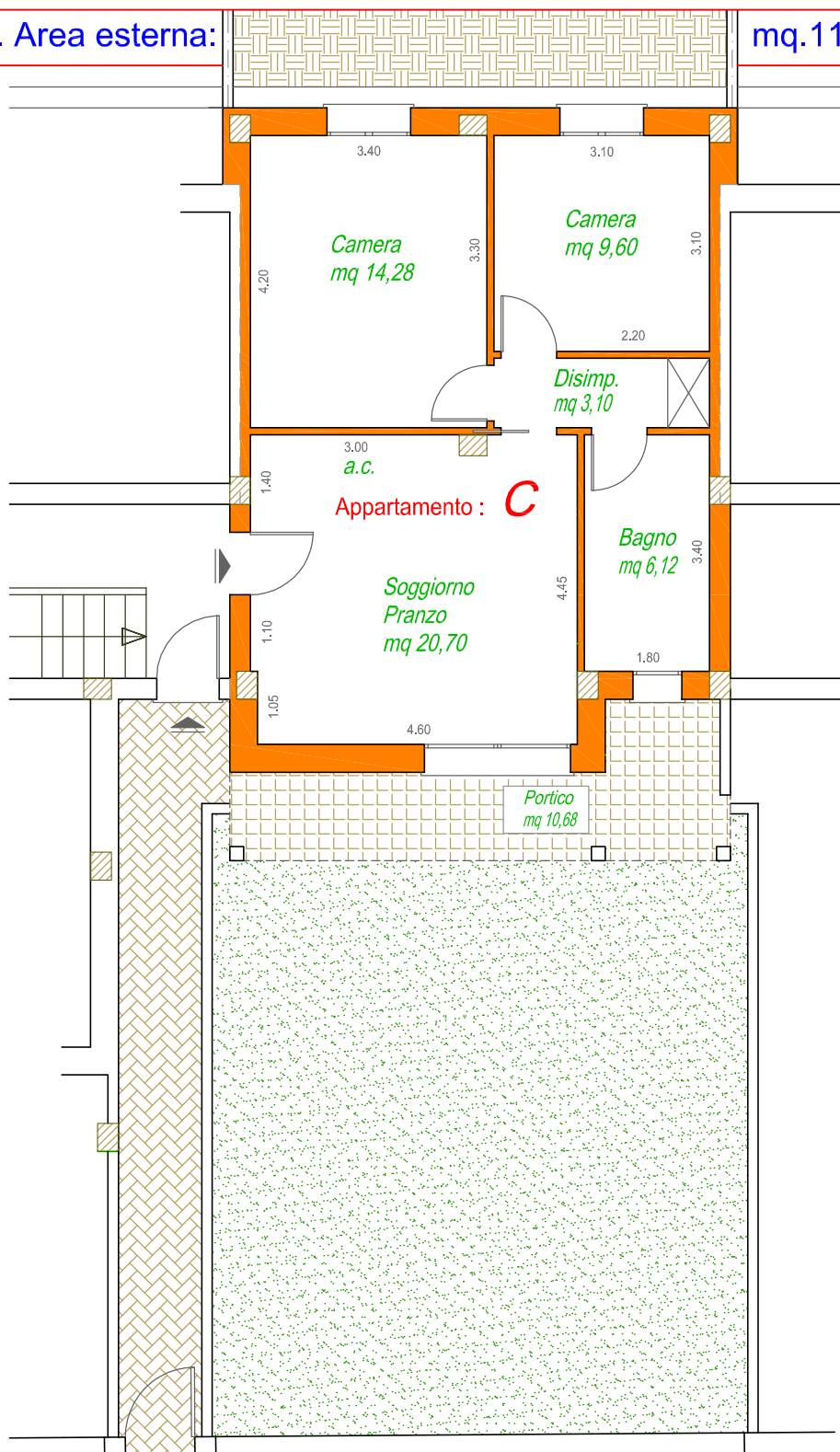


Superficie Commerciale: mq. 65,70

Sup. Comm. Garage+Cantina: mq. 36,50

Sup. Comm. Portico: mq. 10,80

Sup. Comm. Area esterna: mq. 110,10



oggetto:  
NUOVA CONTEA  
Fabbricato 3

**APPARTAMENTO "C"**  
Piano TERRA



Via Casale, 297 scala C int. 2  
47827 Villa Verucchio (RN)

Tel. 0541.670472 - Fax 0541.673035  
[www.immobiliaresemprini.com](http://www.immobiliaresemprini.com)  
[info@immobiliaresemprini.com](mailto:info@immobiliaresemprini.com)

data:

scala:  
1:100