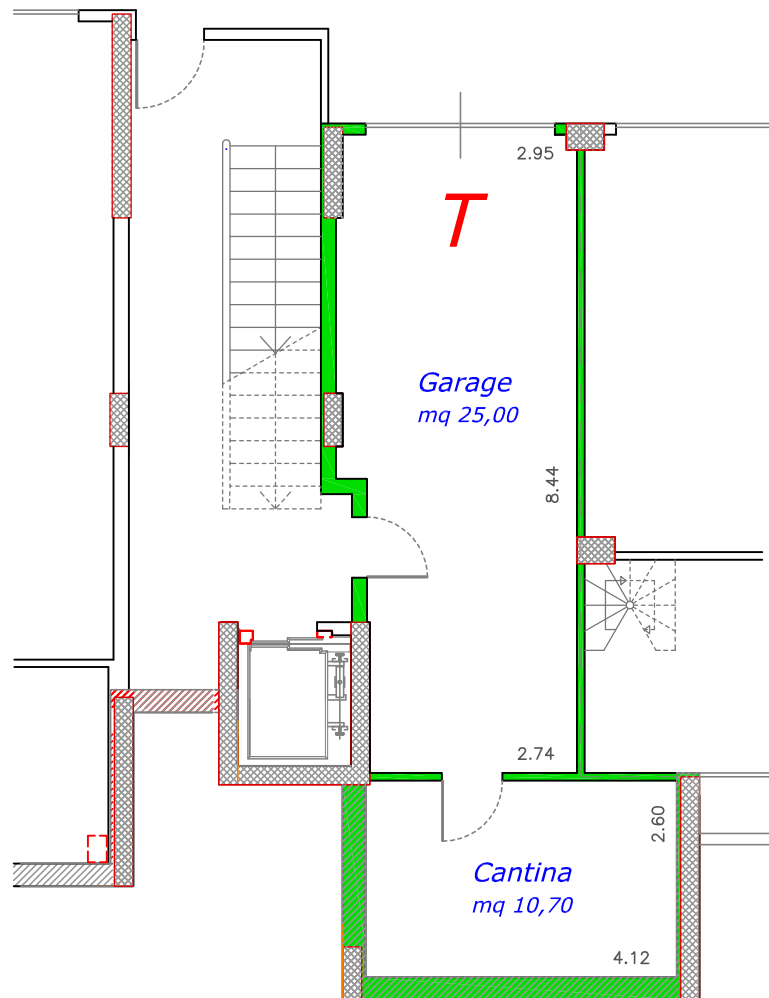


Sup. Comm. Garage+Cantina: mq. 42,10



oggetto:  
Santarcangelo di Romagna  
Residenza "NUOVA CONTEA"  
FABBRICATO 1  
GARAGE e CANTINA "T"  
Piano INTERRATO

  
Semprini  
Severino

Via Casale, 297 scala C int. 2  
47827 Villa Verucchio (RN)

Tel. 0541.670472 - Fax 0541.673035  
[www.immobiliaresemprini.com](http://www.immobiliaresemprini.com)  
[info@immobiliaresemprini.com](mailto:info@immobiliaresemprini.com)

scala:  
1:100