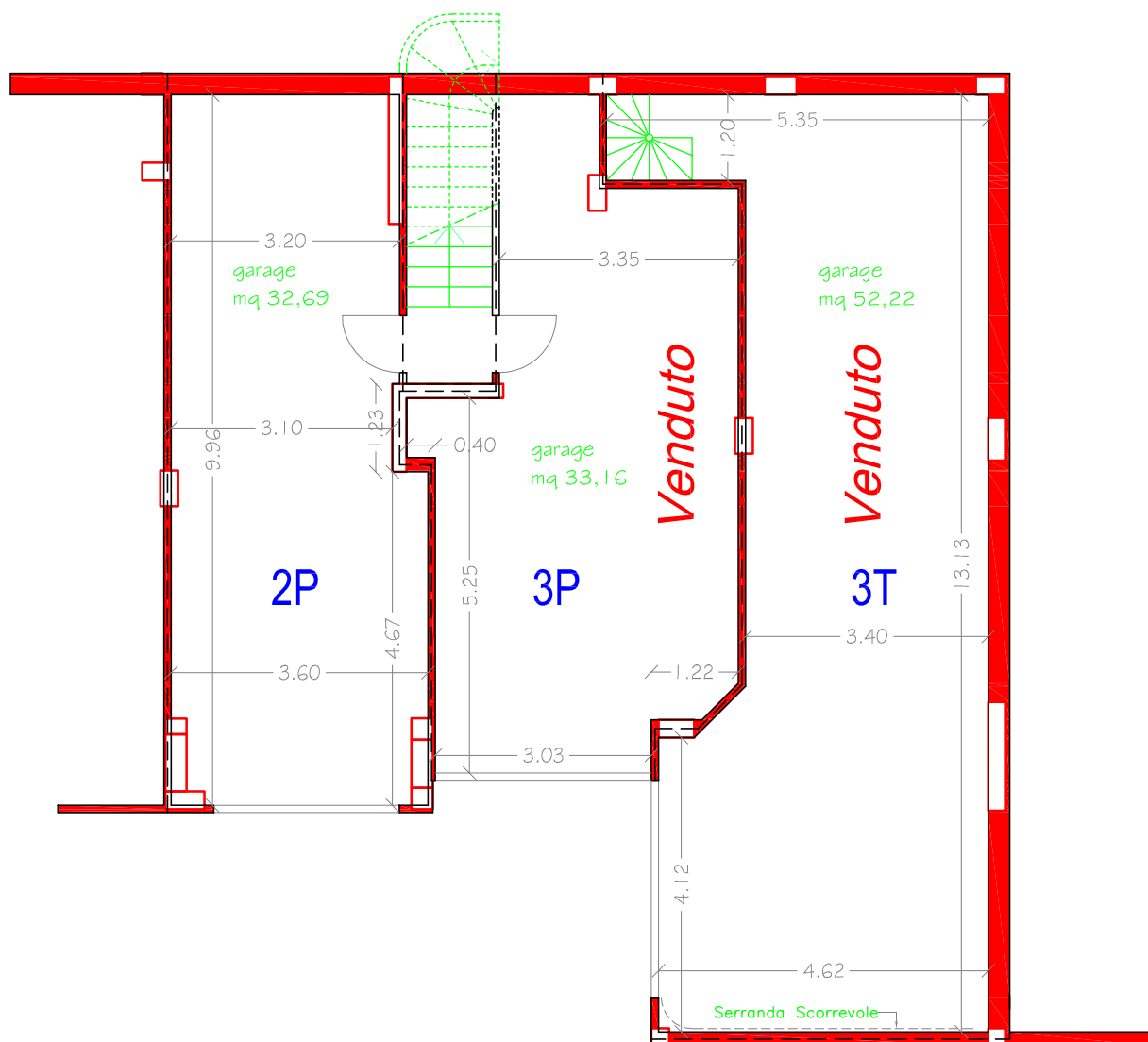


Superficie commerciale 2P mq.36,09

Superficie commerciale 3P mq.35,45

Superficie commerciale 3T mq.59,44



RESIDENZA "SANT' ANDREA"

Poggio Berni
PALAZZINA A

Piano Interrato-Garage 2P-3P-3T



Via Casale, 297 scala C int. 2
47827 Villa Verucchio (RN)

Tel. 0541.670472 - Fax 0541.673035
www.immobiliaresemprini.com
info@immobiliaresemprini.com

scala:

1:100